

Viola Lee



Pdf Sewing Patterns



Darcey



Dress - Top

2-3-4-5-6-7-8-10-12-14



Viola Lee

Darcey

Thank you for purchasing a Viola Lee pdf pattern!
I am available to answer any questions you may have about this pattern.

You may use this pattern for your personal use, as well as making items to sell in your personal shop. No mass production. Please do not share this pattern, I have put a lot of time & effort in creating my patterns & offer them at a competitive price. Any reproduction is strictly prohibited. © 2017 Viola Lee



- ♥ Read *Printing Instruction page before printing pattern pieces.
Read *Instruction page for assembling pattern pieces.
- ♥ Please read through the all the pattern instructions before beginning so you will have an understanding how the garment is sewn together.
- ♥ You can print the entire pattern or you can view the instruction pages on your PC & just print the pattern pages you need to cut out the garment.
- ♥ If you need a closer look at the details in a photo, view the page on your pc so you can enlarge the photos.
- ♥ All seams are **3/8"** unless otherwise indicated in specific step.
Seams can be finished with a serger or by using a tight zig zag.
- ♥ I design my patterns using woven **44"** cotton fabric. If you want to use knit fabrics, I recommend testing with inexpensive knit fabrics.
- ♥ I base my sizing on common commercial patterns, as in any pattern they may need slight altering to get the best fit. Please check finished measurements given in charts before choosing a size. If you are not sure about the best bodice size, use scrap fabric to make a quick test bodice. You can combine 2 sizes to get the best waist to leg length ratio in pants.

Shop for patterns at..... <https://www.violaleepatterns.com>

Sign up for my newsletter to get NEW pattern releases, Special Sales & Free pattern Updates!

You will find *Coupon Codes* on violaleepatterns.com, create a personal pattern bundle & *Save!*

Please contact me if you have any questions or comments on this pattern.

violaleepatterns@hotmail.com

<https://www.etsy.com/shop/ViolaLeePatterns>
<https://www.etsy.com/shop/Fuddieduddies>
<https://www.facebook.com/violaleepatterns>
<https://www.craftsy.com/user/938153/pattern-store>

Printing Pattern

Open & print pattern in **Adobe Reader**.

*Adobe Reader is a free program that can be downloaded here... <https://get.adobe.com/reader/>

Other pdf programs sometimes have hidden printer settings that will change the pattern size.

Follow printing instructions on ***Printing Instructions*** page.

View instructions in *Adobe Reader* so you can enlarge photos to see more detail.

Pattern can be printed in Color or B&W

FABRIC

Size	Bodice	Dress Bottom	Top Bottom	Each Ruffle	Ties
6-12m	1/4 yd	1/3 yd	1/4 yd	1/4 yd	1/4 yd
18m-2	1/3 yd	1/3 yd	1/4 yd	1/4 yd	1/4 yd
3	1/3 yd	1/2 yd	1/4 yd	1/4 yd	1/4 yd
4	1/3 yd	1/2 yd	1/4 yd	1/4 yd	1/4 yd
5	1/3 yd	1/2 yd	1/3 yd	1/4 yd	1/4 yd
6	1/3 yd	1/2 yd	1/3 yd	1/4 yd	1/4 yd
8	1/3 yd	1/2 yd	1/3 yd	1/4 yd	1/4 yd

** 45" woven cotton fabrics

** I refer to the bottom section of the dress or top as the ***Skirt***.

Notions:

Matching Thread

1/4" elastic for bodice

2 yds ribbon 1/4" to 5/8" wide

Optional: 3 yds ribbon for dress or top
without elastic in casing.

***** See chart page 2 for elastic lengths.**

OPTIONAL cutting CHART
for Bodice & Skirt patterns on

Bodice page A &
page A of Dress Skirt & Top patterns

Child Measurement Chart

	1 (12months)	2	3	4	5	6	7	8
Height	32	35	38	41	44	47	50	52
Chest	20	21	22	23	24	25	26	27
Waist	19	20	20 1/2	21	21 1/2	22	23	23 1/2
Hip	21	22	23	24	25	26	27	28
Back Neck to Waist	8	8 1/2	9	9 1/2	10	10 1/2	11 1/2	12

Size	Elastic	Finished Length Dress	Finished Length Top
6mo	4.5"	15.5"	11"
12mo	4.75"	16.5"	11.5"
18mo	5"	17"	12"
2t	5.25"	18"	13"
3t	5.5"	19"	14"
4t	6"	20"	15"
5	6.5"	21"	16"
6	7"	22"	17"
8	7.5"	24"	18"
	Cut 2		

The Bodice width is adjustable with the
ELASTIC length.

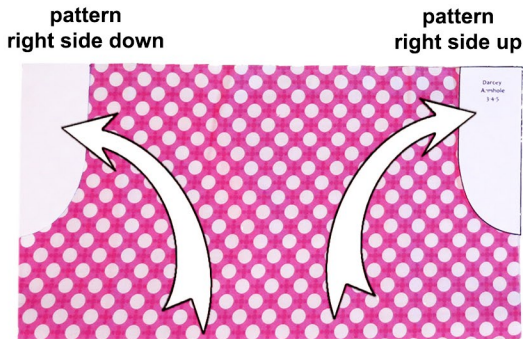
If you are making a DRESS:
print BODICE & DRESS SKIRT patterns.

If you are making a TOP:
print the BODICE & TOP SKIRT pattern.

* You do NOT need to print both.

* Top is worn with Pants.

Cut armholes on bodice sides.



Armholes



Use the armhole pattern to cut the armholes in the bodice..
Pin the **2** bodice pieces **wrong** sides together.

Place the armhole pattern on the *upper right* side of the bodice fabric, with armhole pattern **right side up**.
Cut armhole out.

Place pattern on *upper left* side of the bodice with pattern **right side down**.
Cut armhole out.

** Bodice side is the shortest edge.

Ties



Fold tie in half lengthwise,
right sides together.
Stitch 1 end & longside.



Fold tie piece in half *lengthwise*,
with fabric *right* sides together.

Stitch down **1** long side and across **1** end.
Turn ties *right* side out. Press.

Repeat with other tie.

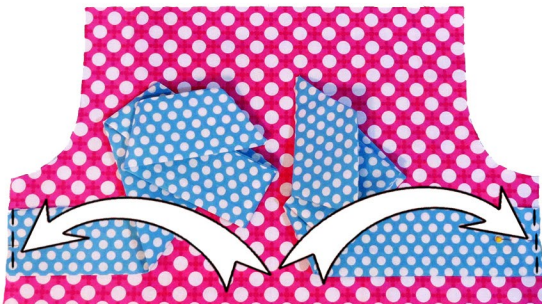
** You can cut tie at an angle at one end or leave straight.

** Optional: Tie edges can be top stitched.

Ties-Bodice



Pin Ties $\frac{3}{4}$ " above
bottom of bodice.

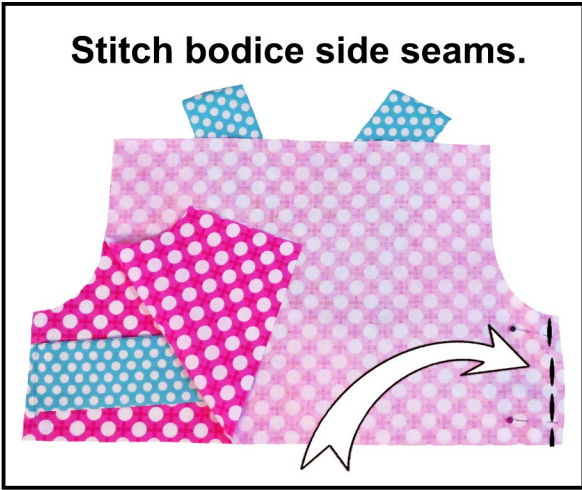


Pin open end of ties to Bodice sides,
 $\frac{3}{4}$ " above bottom of bodice.
Stitch with $\frac{1}{4}$ " seam.

Side Seams



Stitch bodice side seams.



Pin Bodice pieces together at both side seams, with fabric right sides together. Stitch

** Pin ties out of the way so you don't catch free ends in seam.

Armholes



Finish armholes with narrow hem.



Hem armhole raw edges.....

turn raw edge under $\frac{1}{8}$ ", turn under again $\frac{1}{8}$ " to form narrow hem. You can pin hem as you turn it under.

Sometimes it is easier to pin only about 2" of armhole, then roll the edges under as you are stitching.

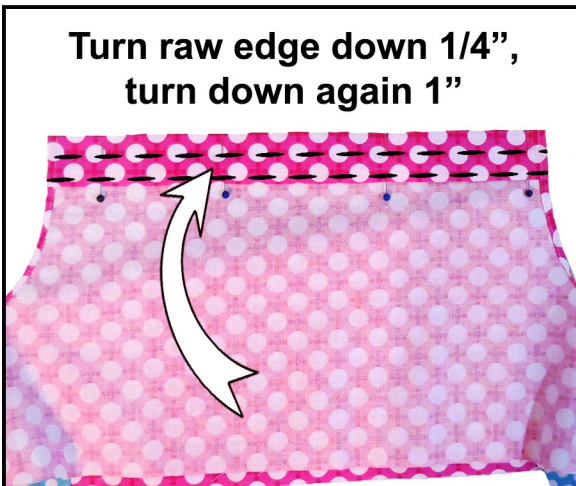
** You can also use a narrow hemming foot.

** $\frac{1}{4}$ " bias tape can be used to cover armhole edges

Elastic Casing



Turn raw edge down $\frac{1}{4}$ ", turn down again 1"



Turn top raw edge of Bodice down $\frac{1}{4}$ ". Turn down again 1". Press & stitch close to folded edge.

Stitch again $\frac{1}{2}$ " down from *top* of casing.

Optional: You can skip this if you are using a wide ribbon without elastic in casing.

Feed elastic through casing.



Elastic



Feed elastic through casing with a safety pin.
Pin elastic at both ends of casing.

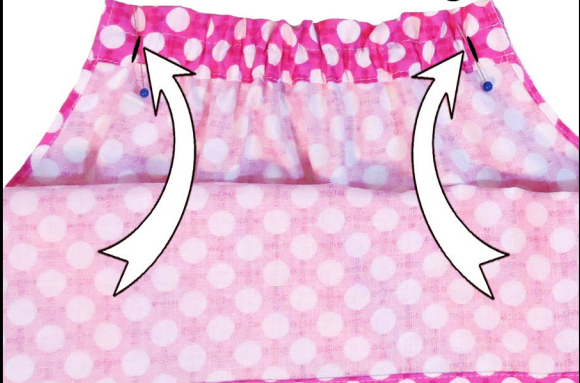
** Elastic sizes in chart are just standard measurements.
Measure across child's chest to adjust fit.

Optional: You can leave the elastic out of the casing & use long ribbons in the casings. See Options page 7 for directions.

Stitching



Stitch through elastic 3/4" from ends of casing.



Stitch through casing & elastic, **3/4"** from *both* ends of casing

Bodice



Bodice



Your Bodice should now look like photo on left.
The bottom edge has raw edges that the bottom skirt section will be sewn to.

You will add ribbon for shoulder ties in a later step.

Ruffles



Follow directions on ***Ruffle Instructions*** page to gather the ruffle strips.

Pin a ruffle strip to the *bottom* edge of a skirt piece, with fabric *right* sides together.

Adjust gathers evenly to the width of the skirt piece. Stitch using a **5/8"** seam .

Repeat with other ruffle strip & skirt piece.

** You can use a ruffle foot to gathers strips.

Side Seams



Pin the **2** skirt pieces together at *both* side seams, with *right* sides together. Stitch

Follow directions on ***Ruffle Instructions*** page to gather the *top* edge of the skirt.

Skirt-Bodice

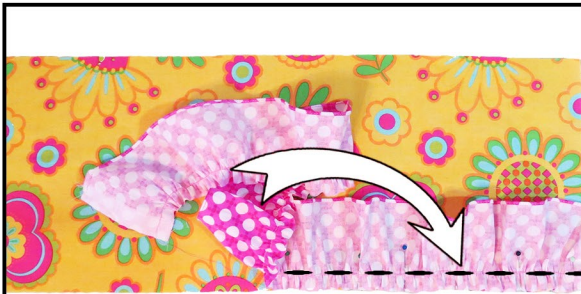


Place the bodice inside the skirt, with *right* sides together. Pin the gathered skirt edge to the bodice.

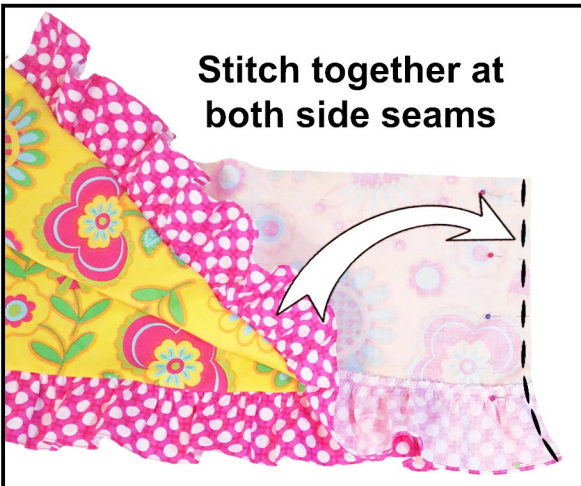
Adjust gathers using the gathering threads to make the skirt the same size as the bodice. Adjust gathers evenly, matching *side* seams. Stitch using **5/8"** seam.

** Be sure you do not catch the ties at the side seams in the stitching.

Press seam allowance *up* toward bodice. Top stitch through seam allowance, **1/4"** from seam on bodice.



Pin & stitch ruffles to bottom edge of dress. Use 5/8" seam.



Stitch together at both side seams

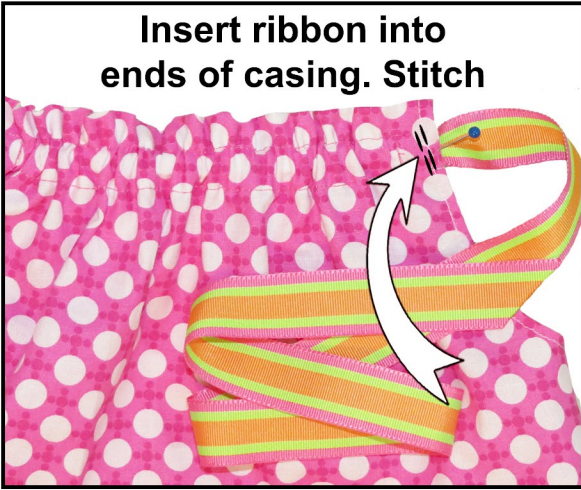


Stitch gathered edge to Bodice bottom edge.

Ribbon Ties



**Insert ribbon into
ends of casing. Stitch**



Cut **4** pieces of ribbon about **15"** - **18"** long.

Insert ribbon piece into the open end of the casing **1/2"**.

Stitch across casing & ribbon twice to secure ribbon in place.

Repeat with the other **3** ribbon pieces.

Trim ribbon at an angle to your preferred length.
Use a lighter or candle flame to carefully seal ends.

** If you aren't sure how long you want your ties,
you can cut the ribbon longer and adjust the
length after you sew it to the dress or top.

** If you are using ribbon wider than **1/2"**,
make a pleat or fold the ribbon to fit into casing.

You're Done!

Options



You can make the dress or top without the elastic in the casing.
Cut **2** pieces of ribbon about **48"** long & feed one piece through each casing with a safety pin.

If you prefer you can skip the stitching **1/2"** from the top of the casing,
so you will have a wider casing for a wider ribbon.

Viola Lee
Darcey



Tilly
Shorts & Capr:
Pattern
Sold Separately



Ruffle Instructions

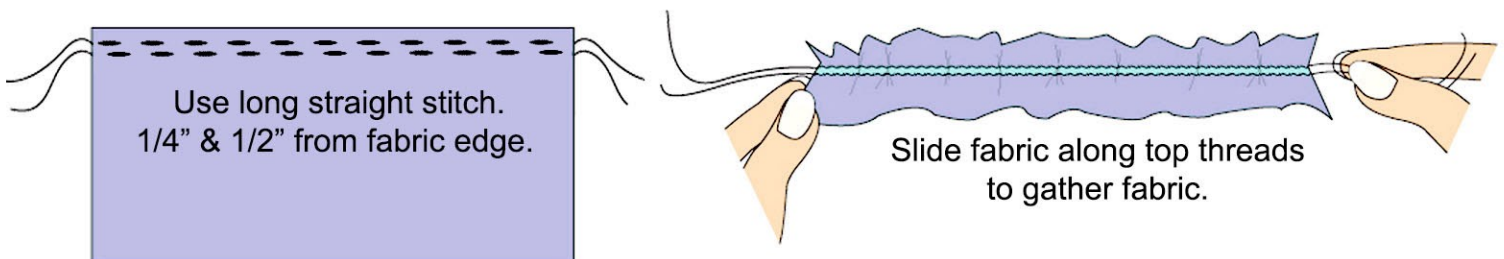
Hem ruffle strips before gathering.

- * Set the straight stitch on your sewing machine to the longest stitch length. Slightly loosen the tension on the top thread, if you can on your machine.
- * Stitch **2** rows of stitching **1/4"** & **1/2"** from raw edge of fabric strip. Leave **4"** or longer tails on all the thread ends. Do **NOT** back stitch at the ends of stitching. You should now have **2** parallel rows of long straight stitches with long thread tails at both ends.
- * At one end of your strip, tie the upper & lower threads together in a knot for both rows of stitching, this will keep the upper threads from pulling out when gathering fabric.
- * At the other end of your fabric carefully tug on the **2 TOP** threads. Your fabric will slide along these threads like a curtain on a curtain rod, gathering into ruffles. Continue pulling, adjusting and evening the ruffles as you go.
- * Gather until the strip is the finished length you need for your project. Tie a knot in the loose ends when you are sure your ruffle strip is the correct length.
- * When sewing ruffles to the item you are making, be sure to stitch just below **1/2"** gathering stitches so they won't show. Use a **5/8"** seam allowance.

Tip: For really *long ruffle strips* or when you have sewn **2** strips of fabric together, make **2** sets of double rows of stitching starting & ending the rows at the seam between the 2 strips.

Tip: To make it easier to spread ruffles out evenly, before gathering mark the center of the strip on the seam allowance on the wrong side of the fabric. On long strips you can mark the strips to evenly divide it into **1/4** or **1/8** sections. Mark the fabric piece you are sewing the ruffle to just as you have the ruffle strip. Pin the gathered strip to the fabric you are sewing it to at the ends & together at the matching marks. Adjust the ruffles evenly between the pins.

Option: You can use a wide zig zag & stitch over a heavy strong thread or dental floss. Slide fabric along heavy thread or floss to gather fabric. Use seam allowance in the pattern you are using as a guide for placement of gathering stitched.



Common Sewing Steps

This page is a guide to sewing steps used in most of my patterns.

Consult this page when referenced in the pattern instructions.

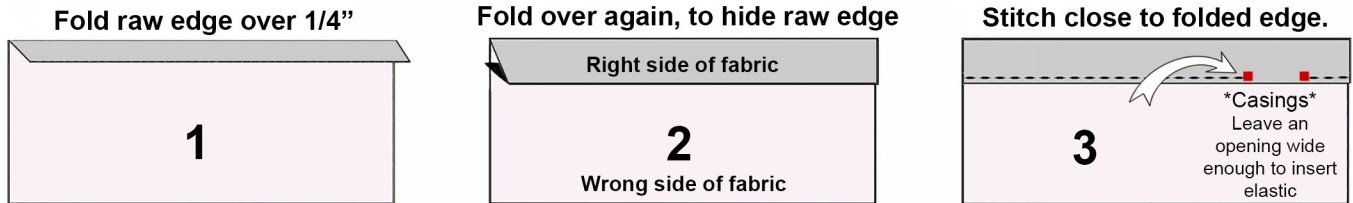
Once you are familiar with these steps your projects will be easier & be completed faster.

I have included these diagrams because sometimes they can be clearer to see than a photo.

Hems & Elastic Casings

Hems & Elastic Casings can vary in width. *Specific widths* to fold over fabric will be given in pattern instructions. Elastic Casings are done the same way except an opening is left to insert the elastic through.

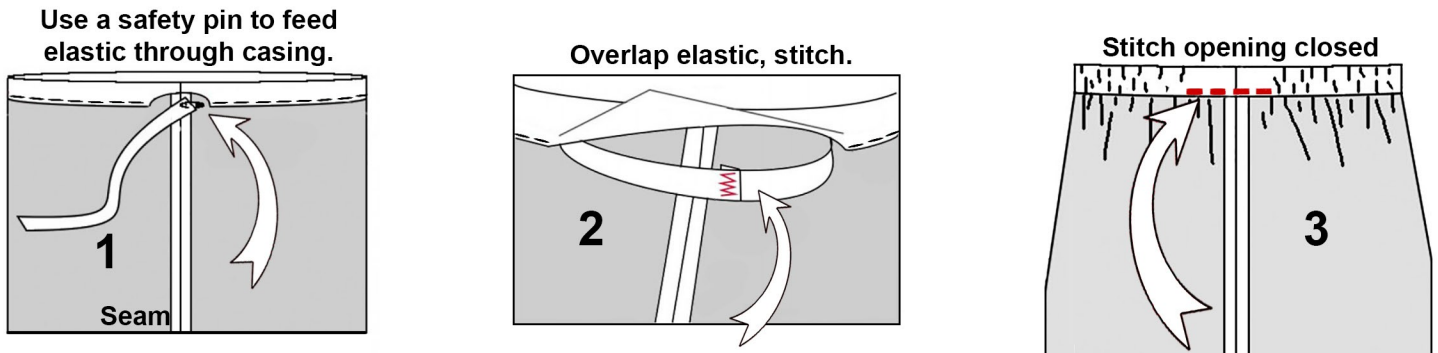
Follow the 3 steps below.



Elastic Casings

When stitching a casing for elastic, leave an opening wide enough to insert the elastic.

Feed the elastic through the casing with a large safety pin.



Top Stitching

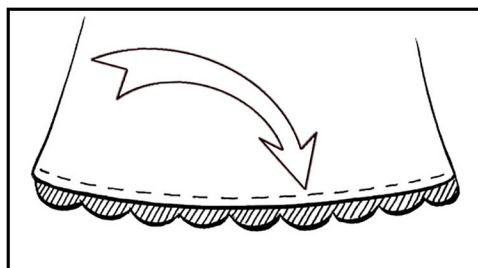
Top stitching is usually sewn with a little longer stitch than is used on seams.

I usually use a stitch length of 3 on my machine, adjust the length to your preference.

When top stitching above *ruffles*, be sure you are stitching through seam allowance, so ruffles lay flat.

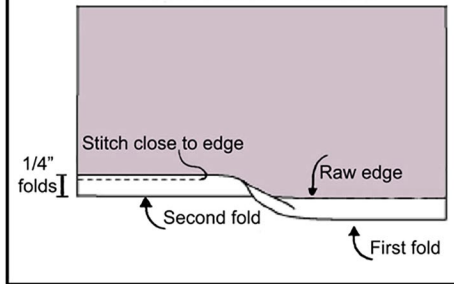
** Location of stitching will be given for specific pattern steps.

Top stitch 1/8 - 1/4" from seam.



Viola Lee Sewing Tips

Narrow Hem



Narrow Hems

To make a narrow hem, turn raw edge up 1/4" toward wrong side of fabric, press. Turn up again 1/4", press. Stitch close to edge.

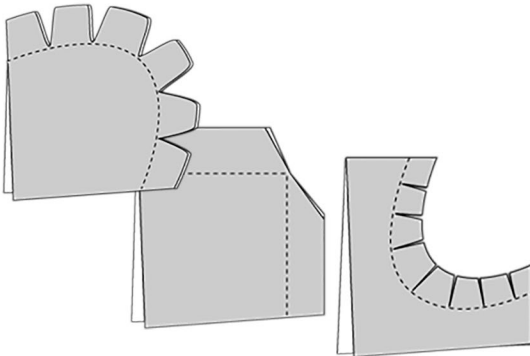
- ** narrow hems can be narrower or wider than 1/4".
- ** You can also use a Narrow Hemming foot

Cutting Fabric Strips

Use a cutting mat & rotary cutter to cut fabric strips. You can also use a ruler or yard stick to mark strips & cut with scissors. Fold your fabric in half lengthwise with selvage edges together. Cut strips across width of folded fabric. Cut strips to needed width, then cut your strips to the length you need.

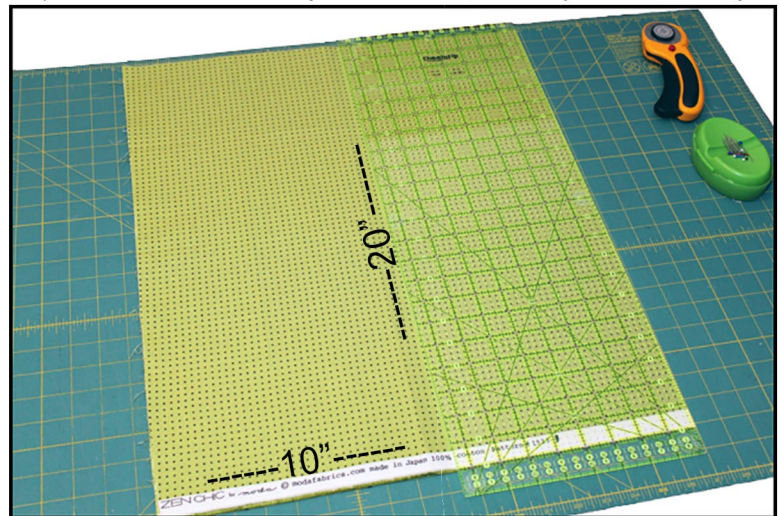
Clipping Curves

Clip Seam allowance on corners & curves. If you don't, your curved seams & corners will not lay flat.



Example: 10 x 20" strip

(with 45" fabric folded you can cut 2, 20" strips at one time.)

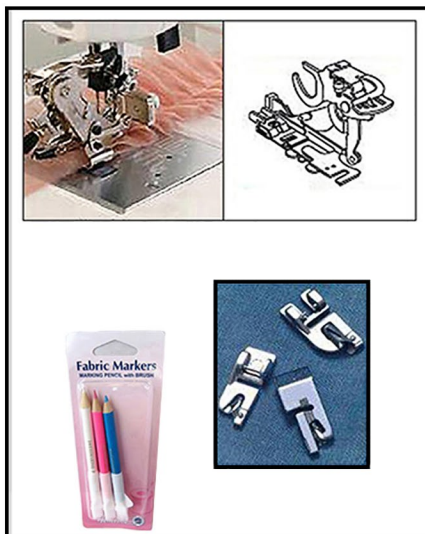


Rotary cutters, cutting rulers & mats are perfect for cutting fabric strips for ruffles & other fabric rectangles. Mats give a surface to cut on plus helpful measuring lines

A sewing machine Ruffle Foot is a worthwhile investment if you will be making a lot of ruffles!

Narrow Hemming feet are time saving for hemming ruffles & other sewing projects.

Chalk pencils are great for marking fabric. Use them to mark centers, pleats, buttonholes etc. on fabrics. Use chalk or fabric marking pens to trace patterns onto fabric.



Printing Instructions

Open pattern file in Adobe Reader to print pattern.

Adobe Reader is a free program you can download at... <https://get.adobe.com/reader/>
Some computers come with a pdf reading program, but sometimes they have hidden settings that can change the pattern size. If you have problems printing try Adobe Reader.

Different printer brands & pdf programs have their own default settings.

They may have different names for the settings that I have listed.

Be sure your settings will not change the size of the pattern or rotate the pattern to landscape format.

If pattern is not fitting together correctly, your printer may have changed just 1 page.

It usually has printed the page in landscape format or changed the pattern size.

Check to be sure pattern prints to measurements on pattern pieces.

Please review instructions for assembling pattern.

*** Check "Actual Size"**

*** Check "Portrait"**

* Choose NONE if there is a Page Scaling option.

* Do NOT choose "Fit to Page" or "Fit to Printable area"

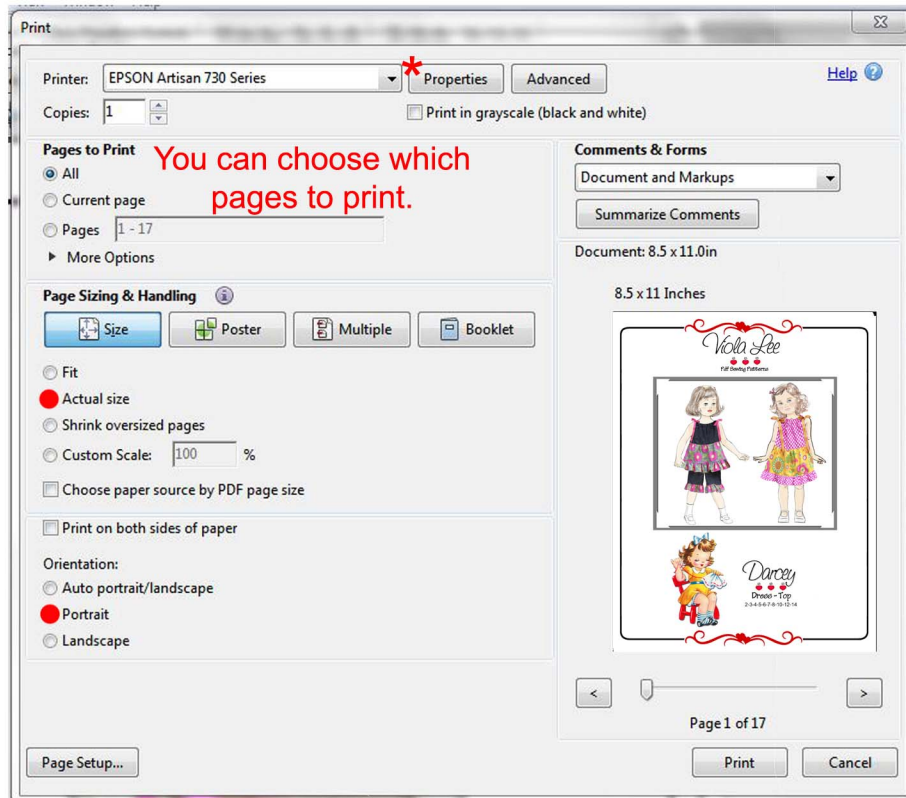
* Do NOT choose "Shrink Large Pages" or "Custom Scaling"

* Do NOT choose "Auto Portrait/Landscape."

* Do NOT check "Center" or "Rotate Page"

If your printer screen has "Properties", click on it & check settings.

This is my Epson
printing screen.
Other brands of
printers will have
different screens
but settings
should be similar
but may have
different names
for settings.



Square should
measure 1" if
pattern printed
correctly.
Also check
measurements on
assembled pattern.



Viola Lee

Darcey

Bodice

Cut 2 on Fold

Optional CUTTING CHART

(inches) Full strip length.

6m	7x12
12m	7x12 1/2
18m	7 1/2 x 13
2	7 1/2 x 13 1/2
3	8x14
4	8 1/2 x 14 1/2
5	9x15
6	9 1/2 x 15 1/2
8	10x16

If you cut strips on fabric fold:
Sample: size 6m cut strip 7x6

Side Seam

6m 12m 18m 2 3 4 5 6 8

Place on Fold

Square should
measure 1" if
pattern printed
correctly.
Also check
measurements on
assembled pattern.

Optional CUTTING CHART

(inches) Full strip length.

6m	9x17
12m	10x18
18m	10x19
2	11x19
3	12x20
4	13x22
5	14x23
6	15x24
8	17x25

If you cut strips on fabric fold:

Sample: 12m cut strip 10x9

To assemble pattern pieces:

Trim pattern pages as needed to overlap pages,
matching numbered triangle ▲ to form a Diamond ◆

Be sure size lines match. Tape pages together on both sides.

You can cut pattern on size line you are making, then trace
around pattern or pin pattern to fabric, then cut on size line.



Viola Lee

Darcey

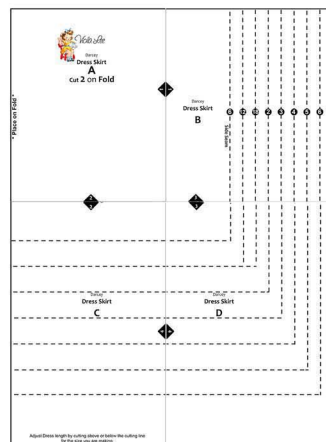
Dress Skirt

A

cut 2 on Fold

Place on Fold

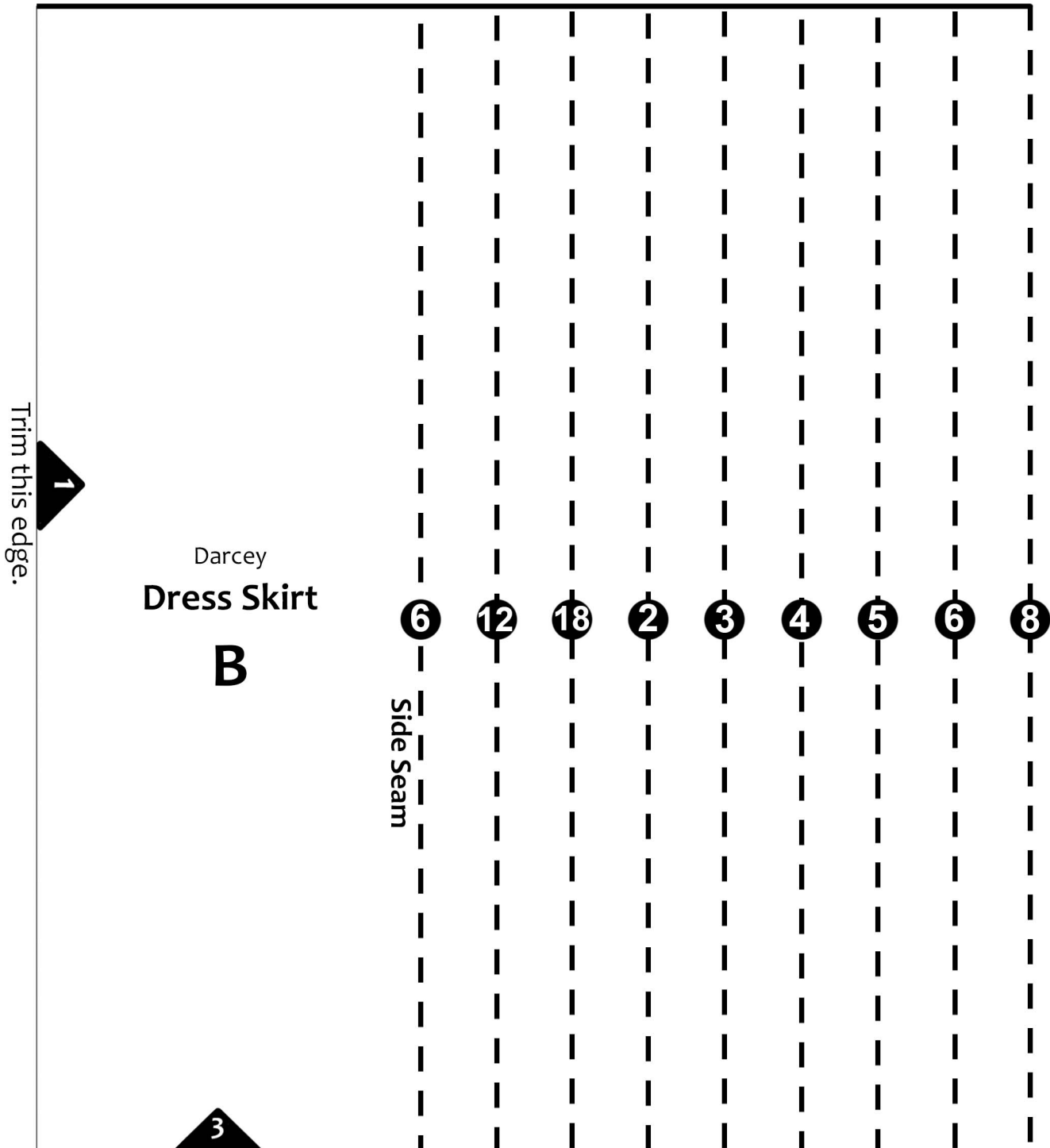
Assembled Pattern



To assemble pattern pieces:

Trim pattern pages as needed to overlap pages,
matching numbered triangle ▲ to form a Diamond ◆
Be sure size lines match. Tape pages together on both sides.

You can cut pattern on size line you are making, then trace
around pattern or pin pattern to fabric, then cut on size line.



Trim this edge.

2

Darcey

Dress Skirt

C

4

Adjust Dress length by cutting above or below the cutting line
for the size you are making.

Trim this edge.

3

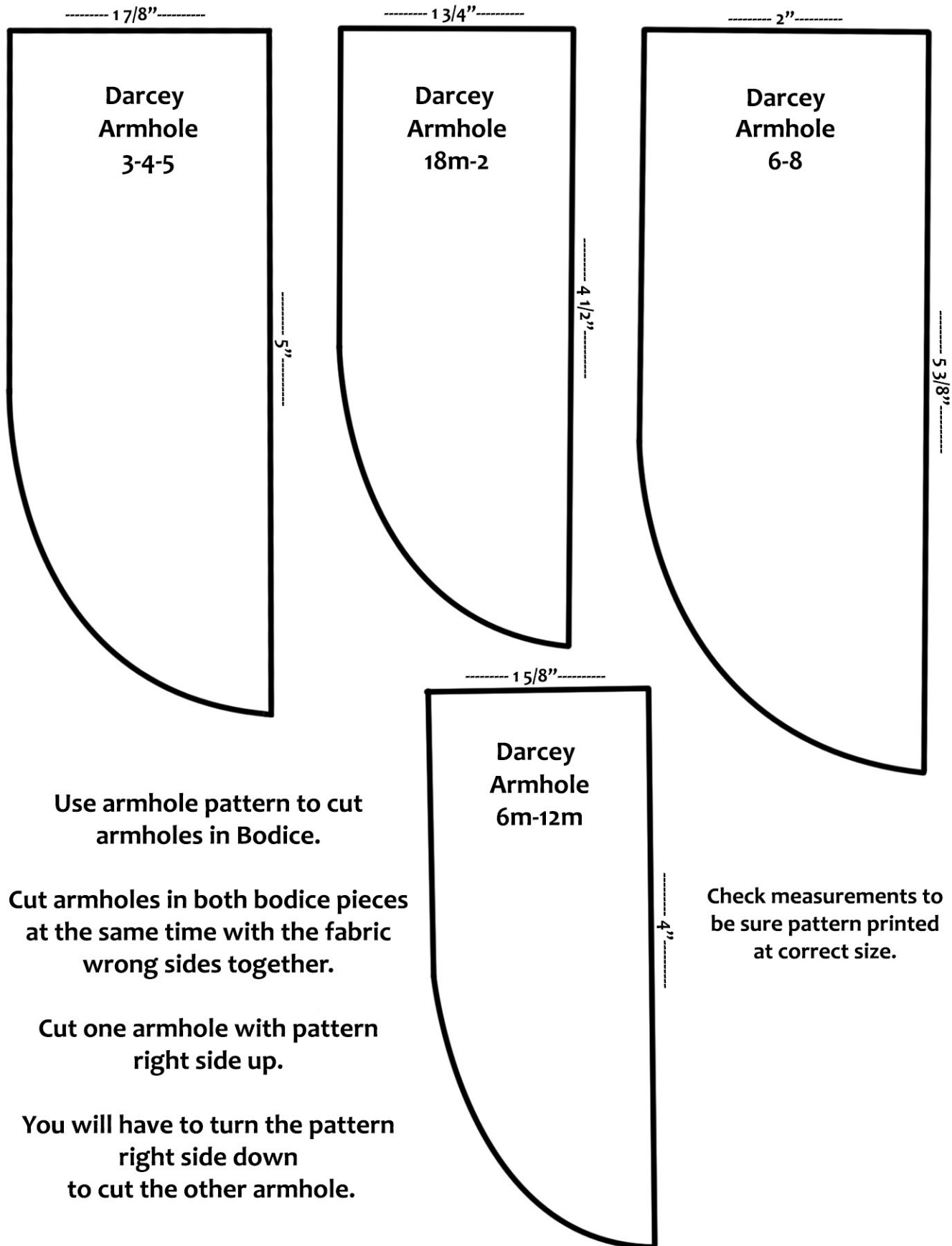
Darcey

Dress Skirt

D

4

Trim this edge.



Use armhole pattern to cut armholes in Bodice.

Cut armholes in both bodice pieces at the same time with the fabric wrong sides together.

Cut one armhole with pattern right side up.

You will have to turn the pattern right side down to cut the other armhole.

Check measurements to be sure pattern printed at correct size.

1

Darcey
Ruffle

B

* Place on Fold *



Viola Lee

Darcey

Ruffle

A

Cut 2 on Fold

-----20"-----

6m

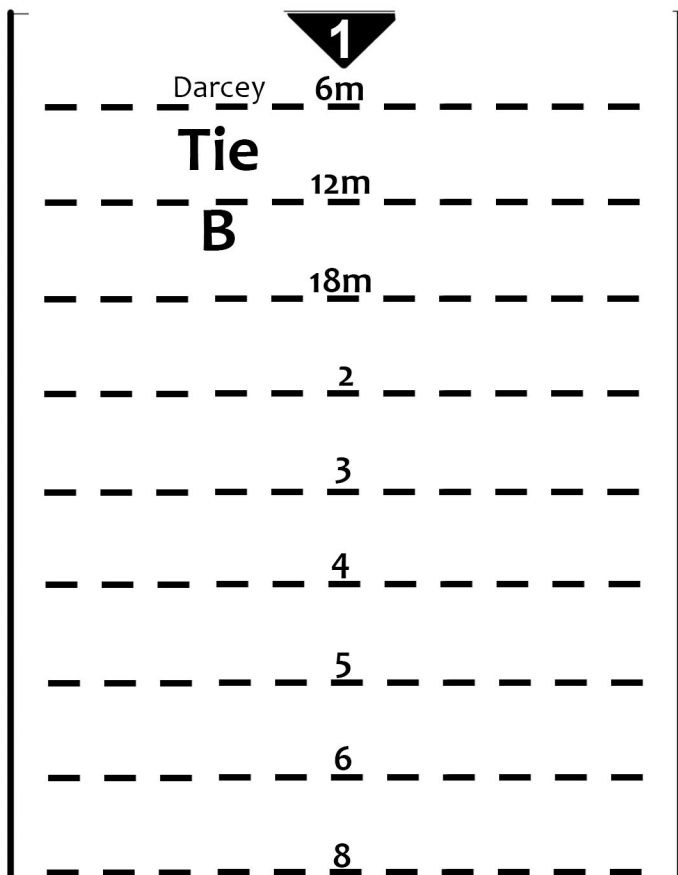
12m-18

2-3

4-5-6-7-8

-----3 1/4"-----

1



To assemble pattern pieces:

Trim pattern pages as needed to overlap pages, matching numbered triangle ▲ to form a Diamond ◆. Be sure size lines match. Tape pages together on both sides.

You can cut pattern on size line you are making, then trace around pattern or pin pattern to fabric, then cut on size line.

*** Place on Fold ***



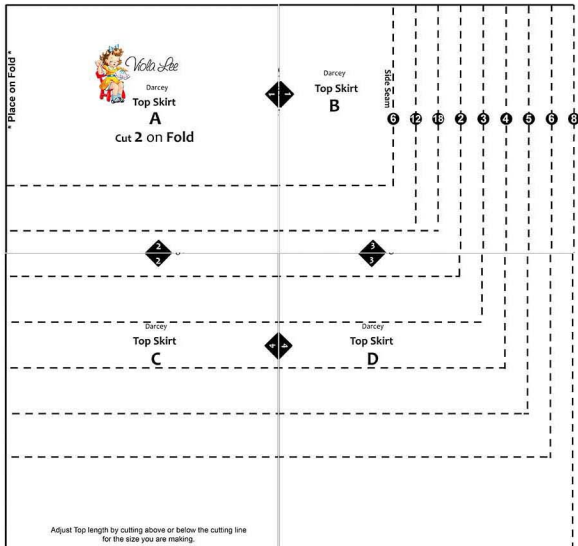
Viola Lee
Darcey

**Tie
A**

Cut 2 on Fold

Fabric Tie is optional, you can also use
RIBBON

Assembled Pattern



Square should measure 1" if pattern printed correctly.
Also check measurements on assembled pattern.

Optional CUTTING CHART

(inches) Full strip length.

6m 4x17

12m 5x18

18m 5x19

2 6x20

3 7x21

4 8x22

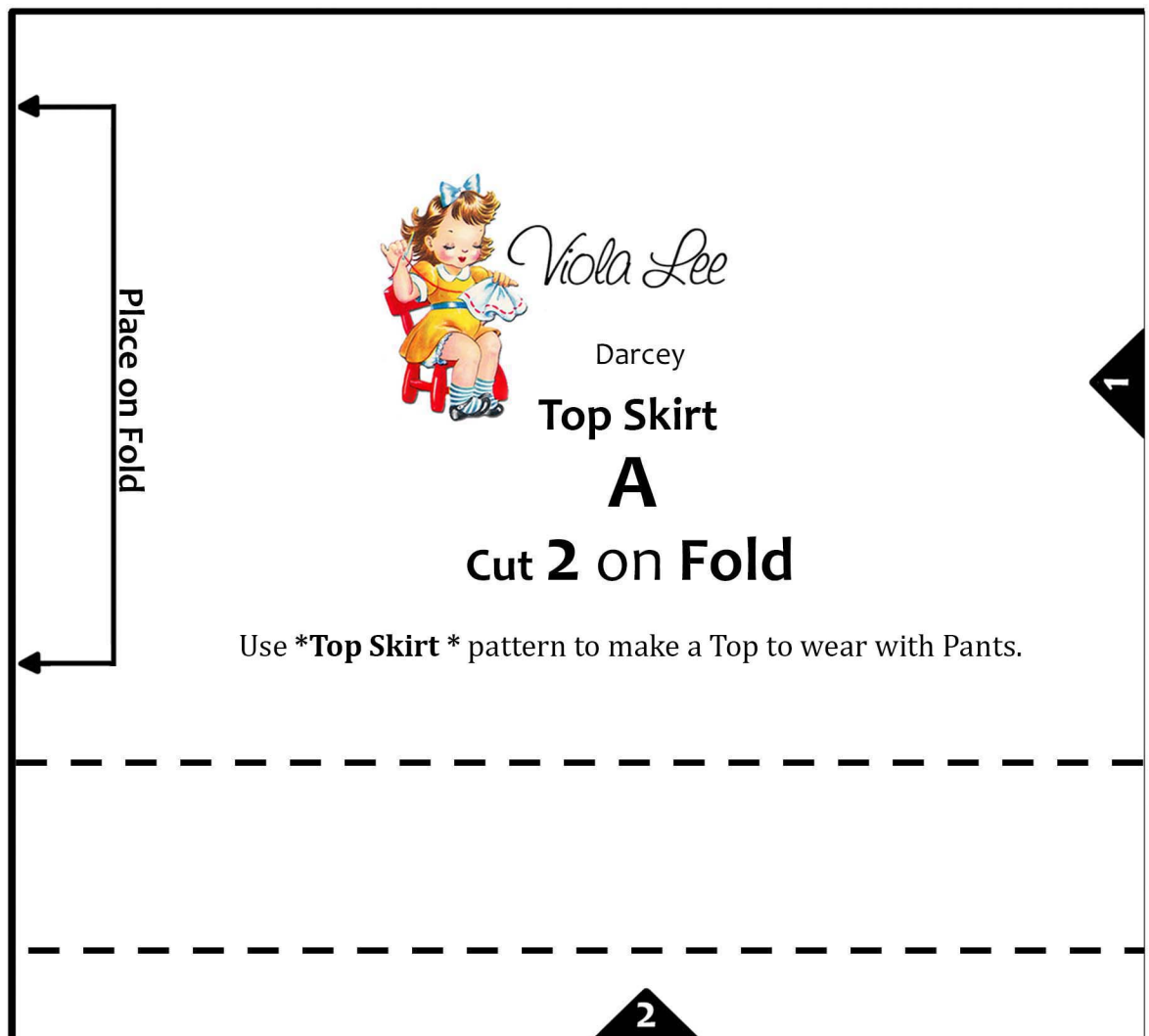
5 9x23

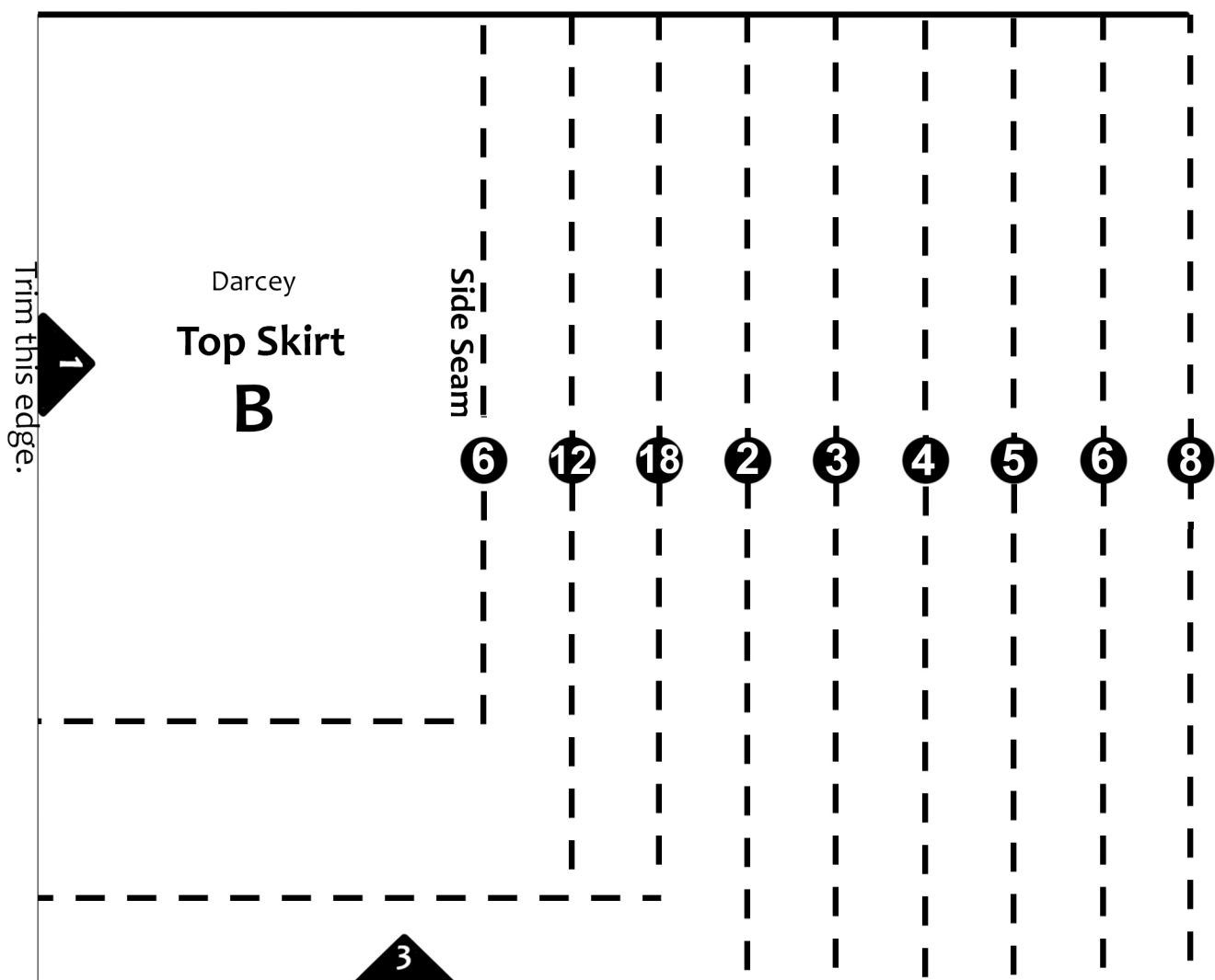
6 10x24

8 11x25

If you cut strips on fabric fold:

Sample: 12m cut strip 5x9





Trim this edge.

2

Darcey

Top Skirt

C

4

Adjust Top length by cutting above or below the cutting line
for the size you are making.

Trim this edge.

3

Darcey

Top Skirt

D

Trim this edge.

4